

Efficiently Rebasing REMI to Generate an Annual Forecast: 2018-2021 and Beyond

Peter Gunther, Senior Fellow CCEA

at

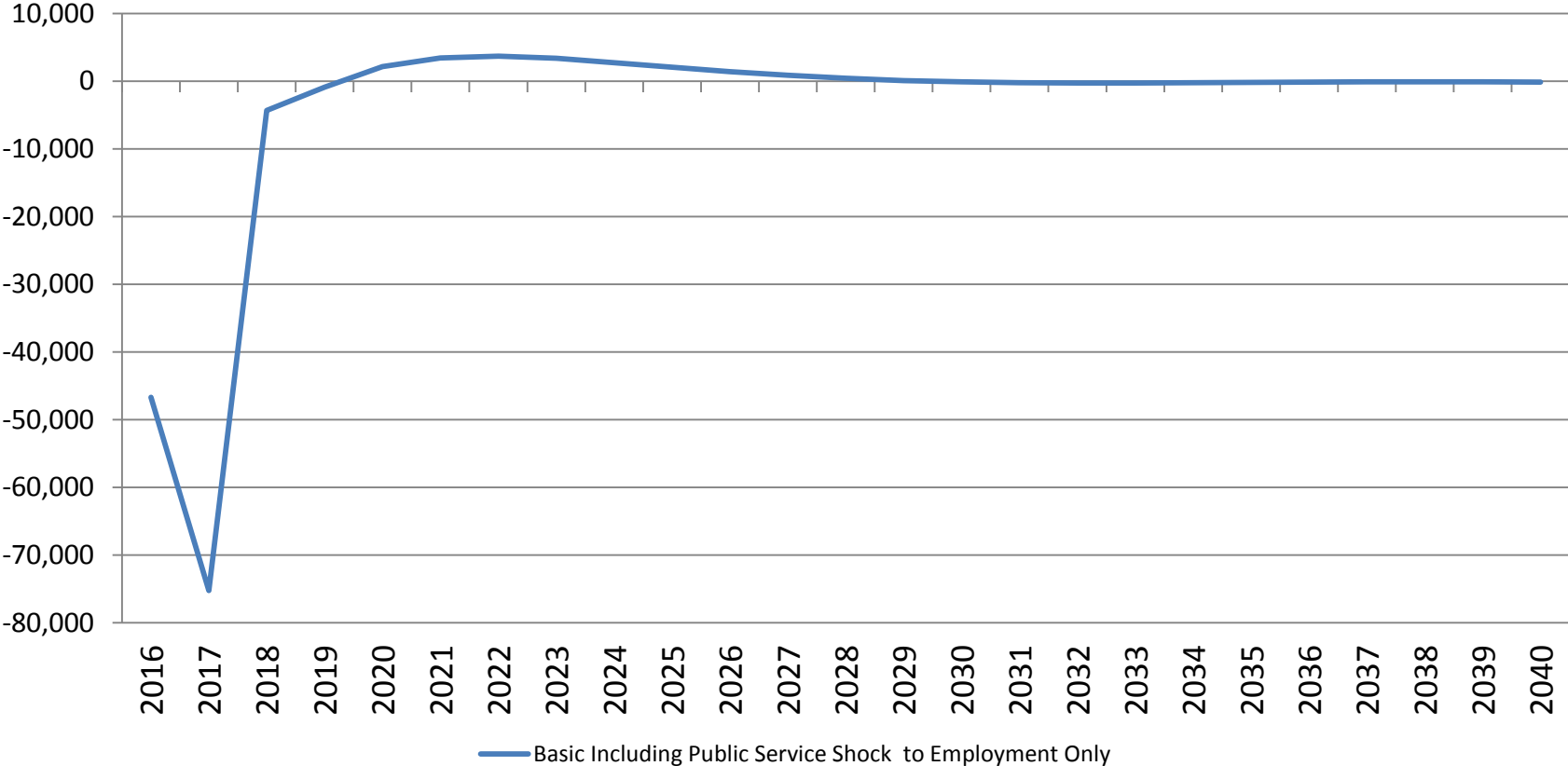
REMI Spring Conference 2018

Rebasing Needed to Forecast

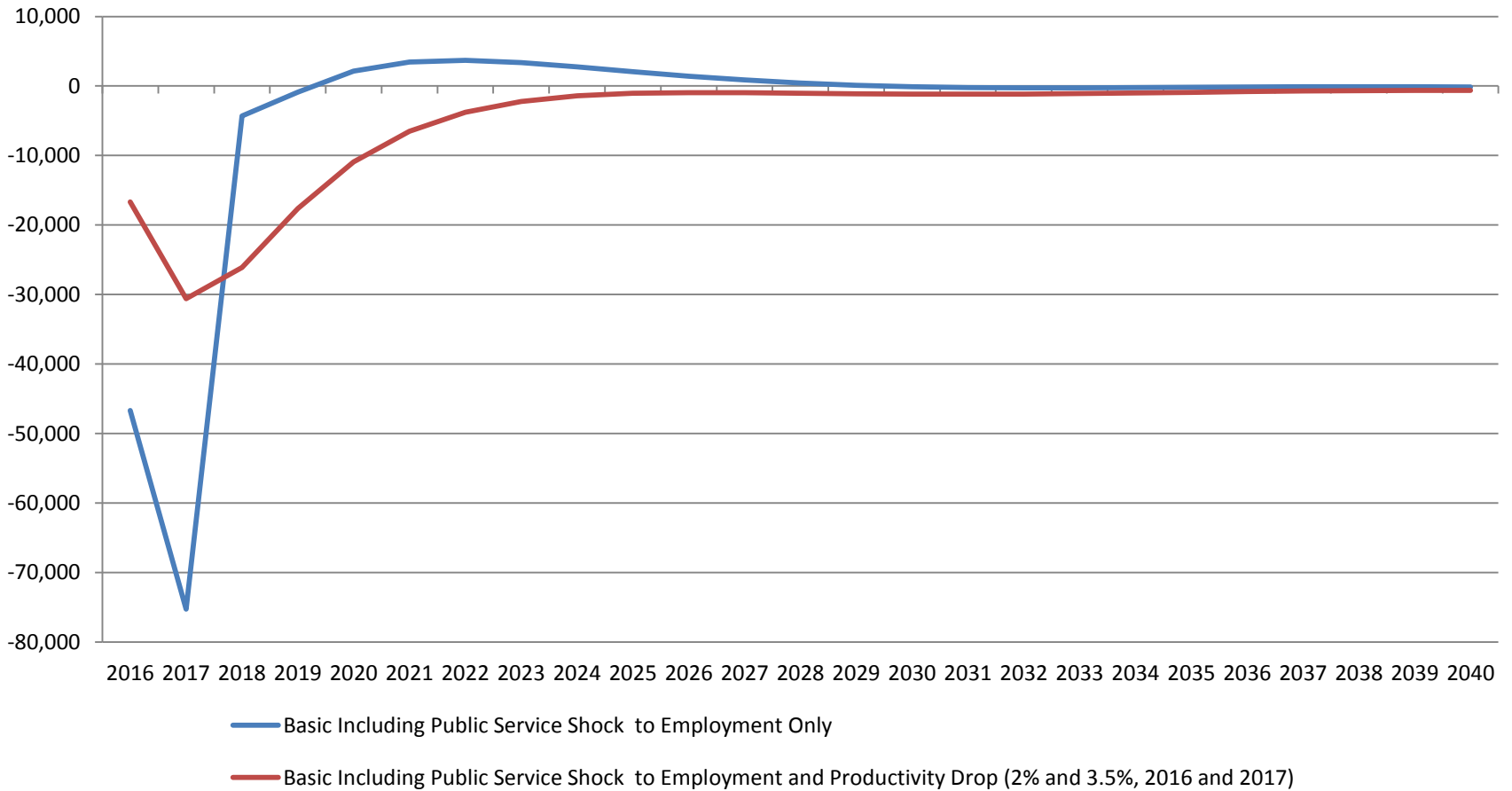
Indicator	REMI Base Case		BLS/BEA Data		
	2016	2017	2015	2016	2017
Employment (LAUS) (1,000s)	2,320	2,344	1,787	1,807	1,829
Employment (State & Metro) (1,000s)			1,597	1,605	1,611
Private Employment (State & Metro) (1,000s)	2,047	2,072	1,435	1,443	1,448
Residence Adjusted Employment (1,000s)	2,473	2,499			
Chain linked RGDP (2009 \$ Billions)	231	236	225	225	224
Personal Income (Current \$ Billions)	254	264	247	253	257

Recovery to REMI Base-Case (93%?)

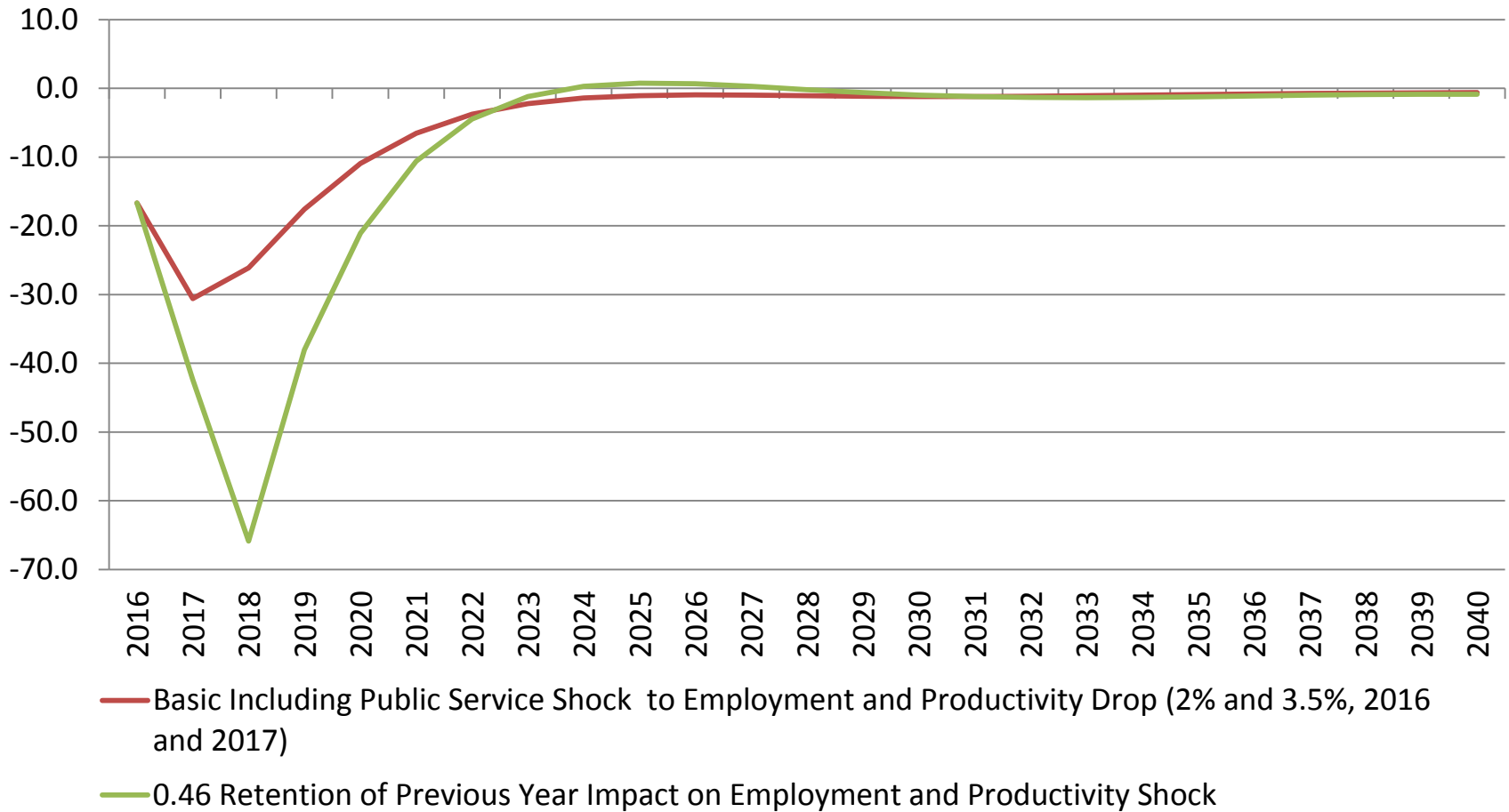
Basic Including Public Service Shock to Employment Only



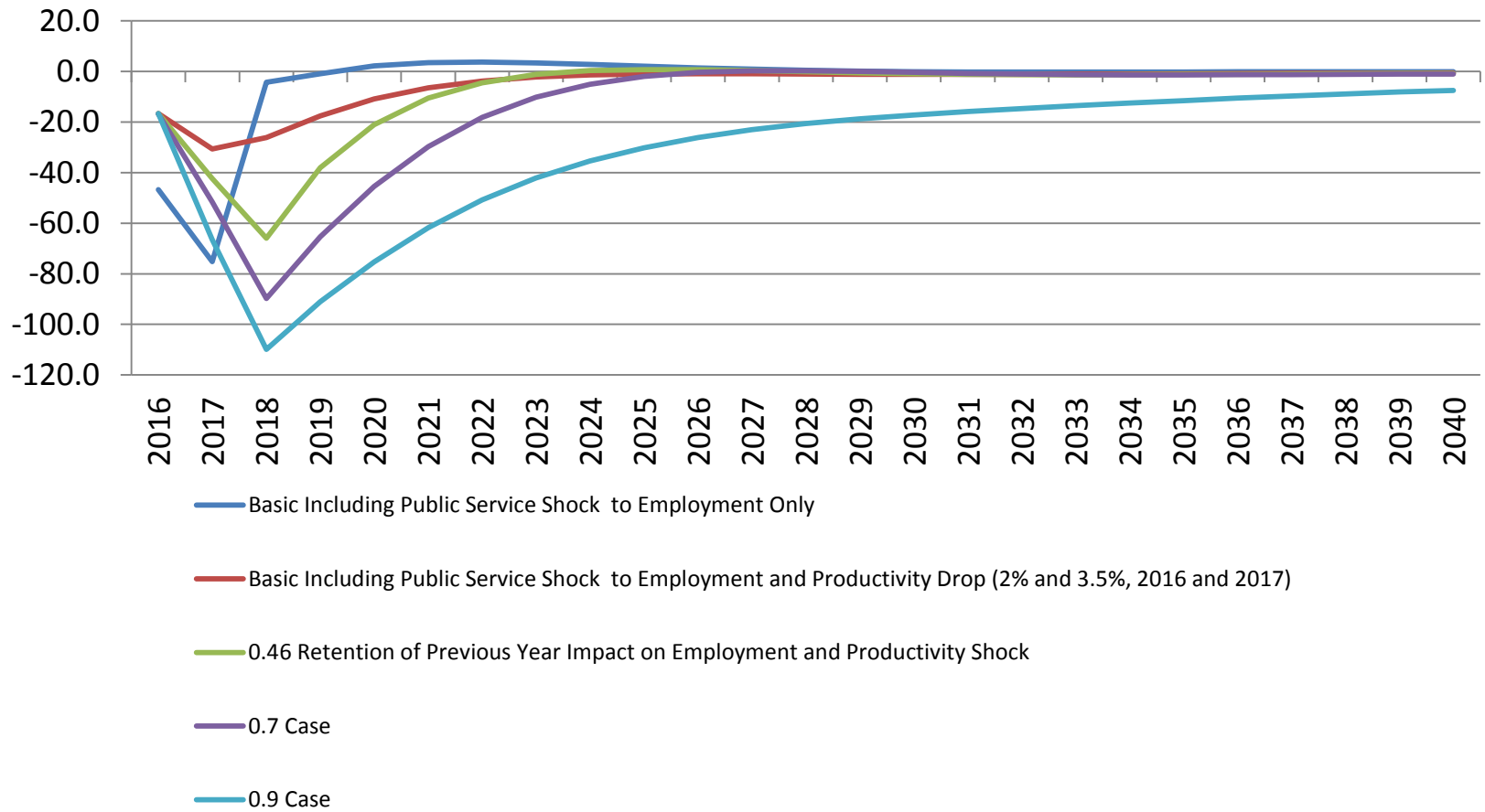
Employment and Factor Productivity Adjustments (# Jobs)



Employment impacts Adjusted for Employment Factor Productivity and Extended Impacts (1,000s)



Employment Impacts: Alternative Extensions (1,000s Jobs)

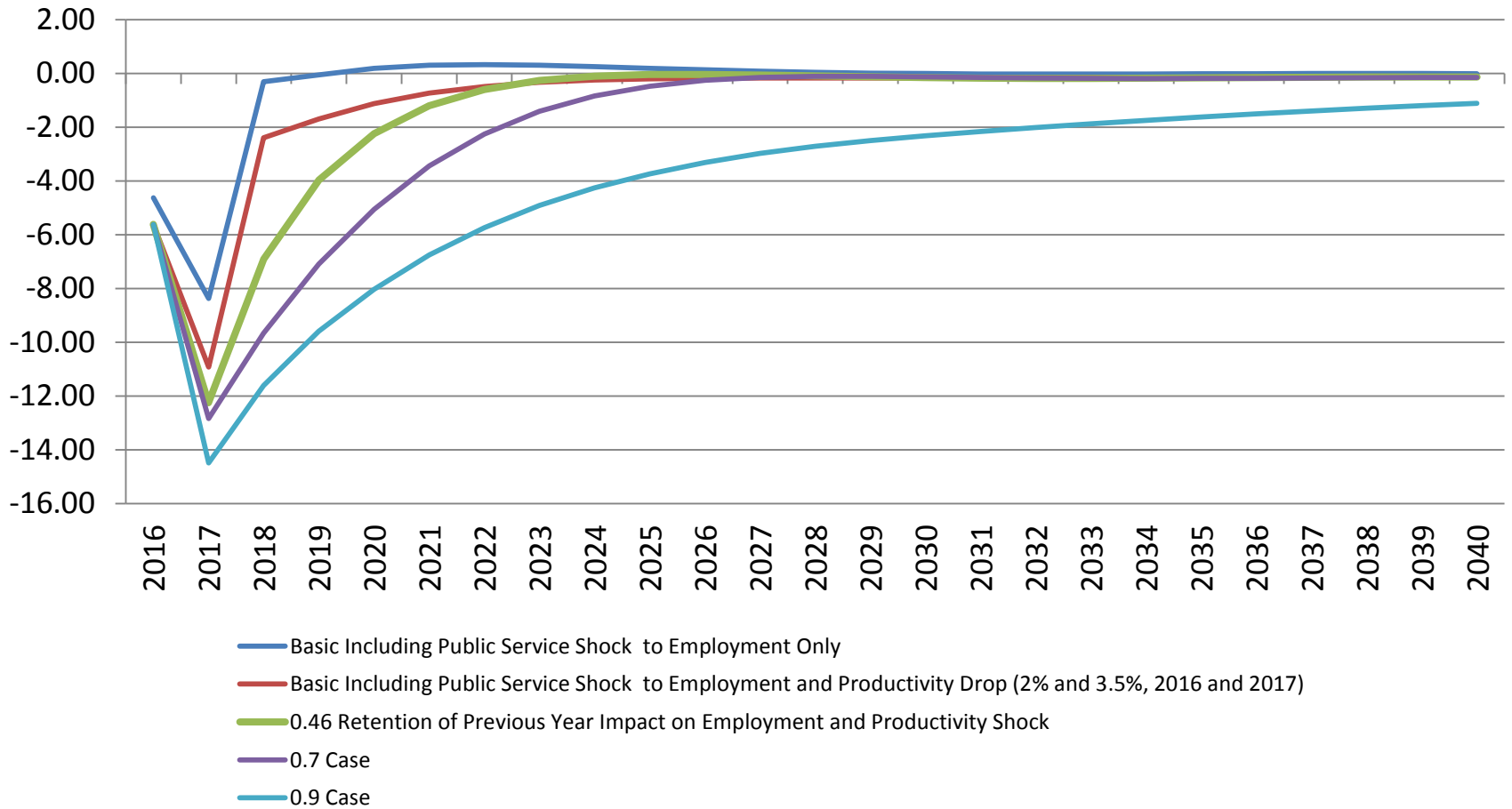


Adjustments Made by Various REMI Cases Relative to Required Changes in Base-Line RGDP (1000s of Jobs)

Case\Year	2016	2017
Basic Including Public Service Shock to Employment Only	-4.62	-8.37
Basic Including Public Service Shock to Employment and Productivity Drop (2% and 3.5%, 2016 and 2017)	-5.62	-10.92
0.46 Retention of Previous Year Impact on Employment and Productivity Shock	-5.62	-12.24
0.7 Case	-5.63	-12.83
0.9 Case	-5.62	-14.49
Targeted Changes	-6	-12

RGDP Recovery Relative to REMI Base Case

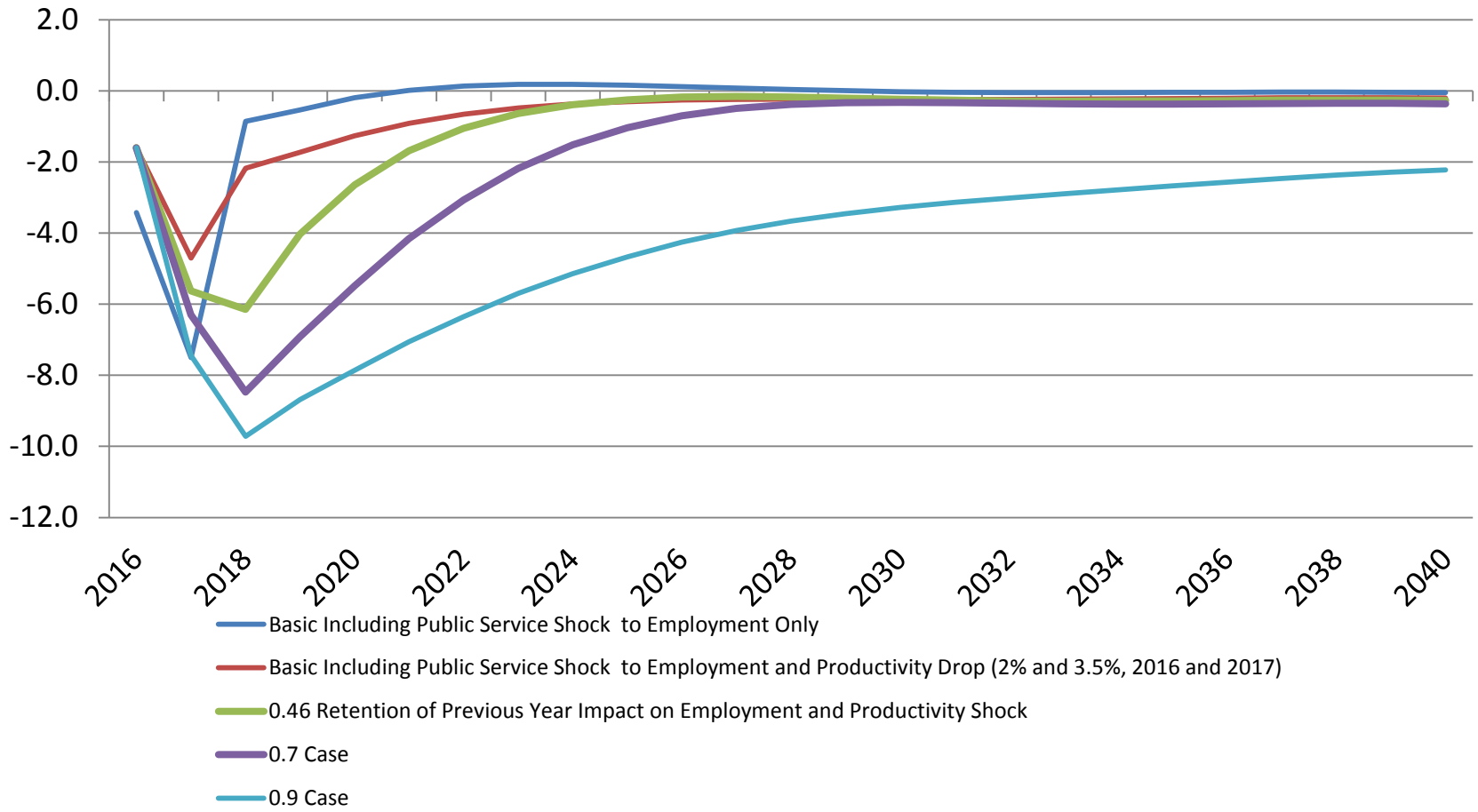
2016-2040: Extension Sensitivities (Billions 2009 \$)



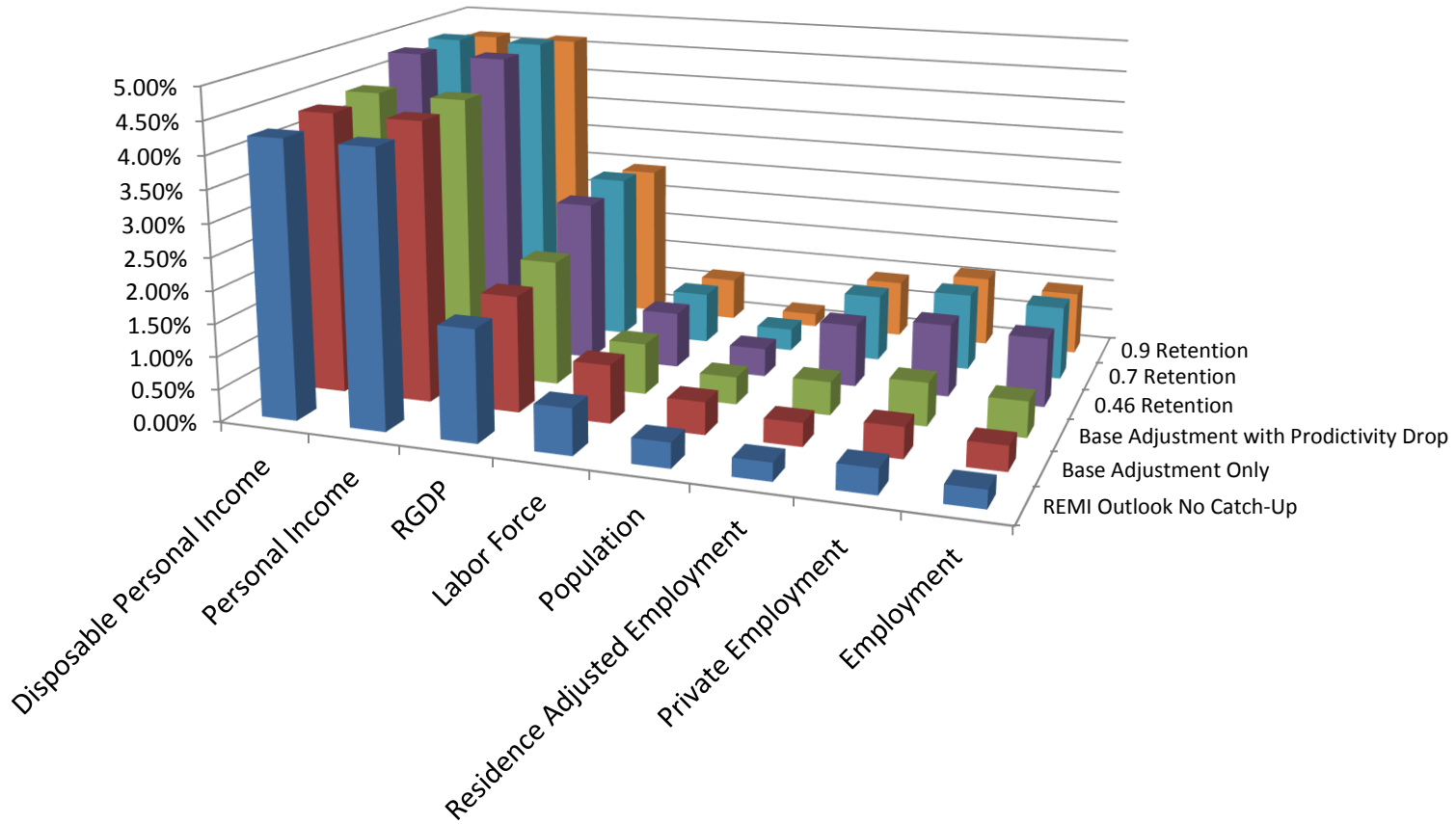
Adjustments Made by Various REMI Cases relative to Required Changes in Base-Line PI (Billions Current \$)

Case\Year	2016	2017
Basic Including Public Service Shock to Employment Only	-3.4	-7.5
Basic Including Public Service Shock to Employment and Productivity Drop (2% and 3.5%, 2016 and 2017)	-1.6	-4.7
0.46 Retention of Previous Year Impact on Employment and Productivity Shock	-1.6	-5.6
0.7 Case	-1.6	-6.3
0.9 Case	-1.6	-7.4
Targeted Changes	-1	-7

PI Recovery Relative to REMI Base Case 2016-2040: Extension Sensitivities (Billions Current \$)

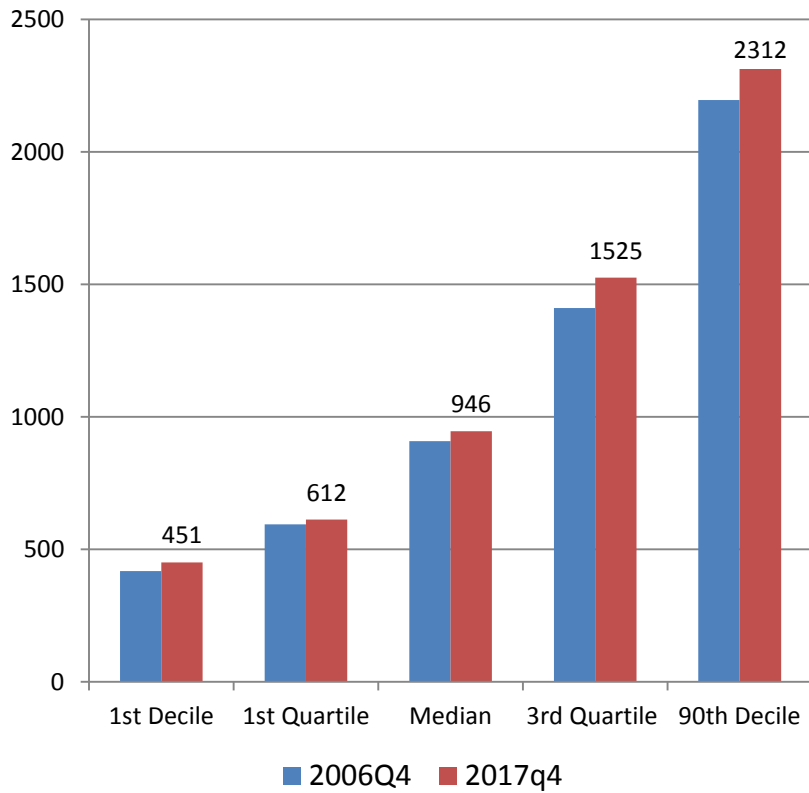


CAAGRs by Scenario for Key Indicators: 2018-2021

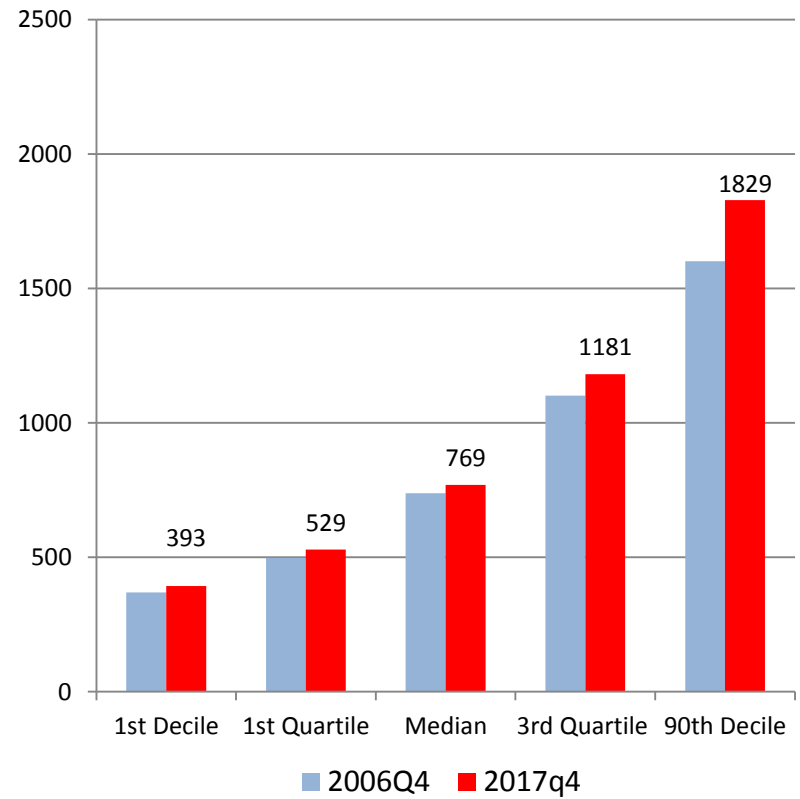


Bounds on Earner Segments of Weekly Wages and Salaries (Real 2017 \$)

Males

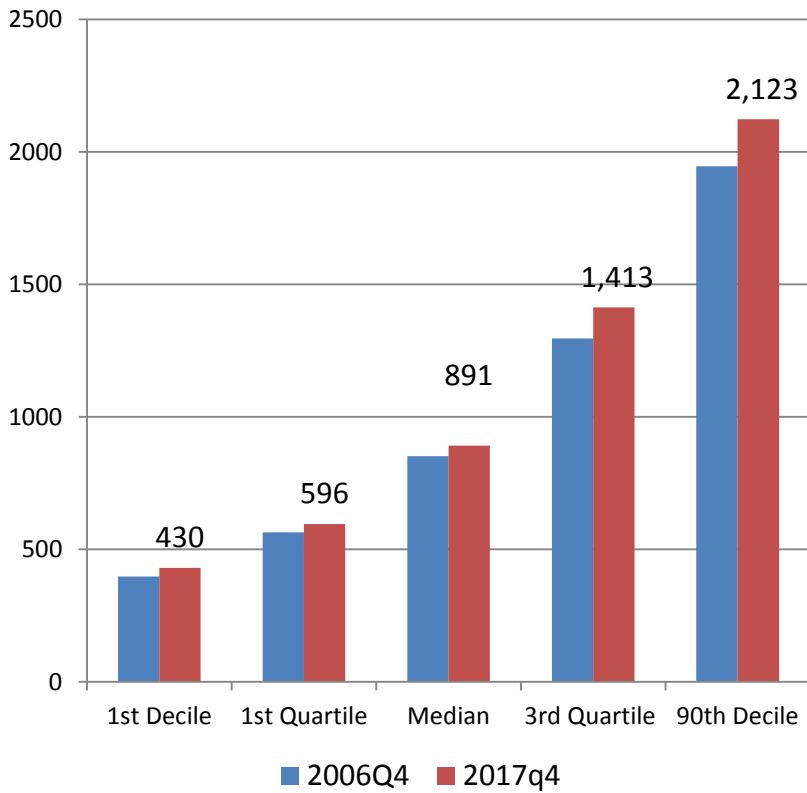


Females



Bounds on Earner Segments of Weekly Wages and Salaries (Real 2017 \$)

Whites



Black African Americans

